

The Short Guide

NOIDS

For safety instruction and detailed explanation, please read the User Manual Carefully.

OFF



Evaporation

Ethanol extraction
max. 5h



Oil

THC strains
≈ 2.5h



Decarb

THC strains
≈ 1.5h to 4h



CBD Decarb

CBD strains
≈ 1.5 to 2.5 h

CBD Oil

CBD strains
≈ 3h

Oil/Butter Infusion:

Step 1: Decarb your herb

For CBD dominant strains and 1:1 strains (equal amount of CBD and the other), use the CBD Decarb function.

For other strains, use the Decarb function.

IMPORTANT:

Decarb time varies depending on the amount of herb content, herb's moisture level, room temperature, etc.

POT uses Dynamic Heating Algorithm to keep temperature fluctuation within $\pm 1^\circ\text{C}$ (1.8°F). It means, the machine decides how long it takes to fully decarb your herb. The cooking time varies as a result. The less you decarb, the longer it takes.

The Decarb function has the largest variation of cooking time due to its special temperature requirement.

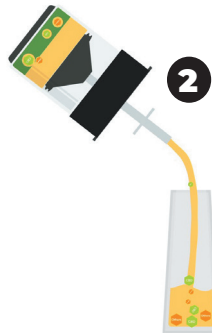
Step 2: Infuse decarbed herb

For CBD dominant strains and 1:1 strains (equal amount of CBD and the other one), use the CBD Oil function.

For other strains, use the Oil function.

Step 3: Filter the herb out

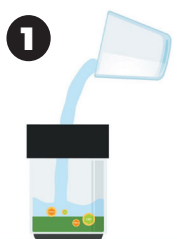
Apply the Filter Set



Secure the upper lid
Turn the Glass upside down
Push the Filter down

Step 4: Collect the last drops (optional)

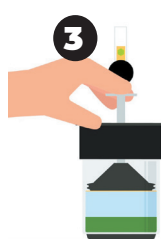
If you wish to collect the last drops of the remaining oil after filtering, use the Pipet and warm water.



Add warm water in
(above 50°C / 122°F)



Wait till oil sits
calmly on top of
water



Apply Filter and
Pipet, slowly push
down the Filter till
oil ascend into the
Pipet



Cover the top of
the Pipet with one
finger, remove
the oil



Release oil by
lifting the finger

Ethanol Extraction - Wax & Tincture

Step 1: Decarb your herb

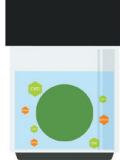
Please see the instructions under Oil/Butter Infusion.

Step 2: Infuse decarbed herb into food-grade ethanol

IMPORTANT: use only **food-grade** alcohol (**95% / 190 proof or up**) for extraction.

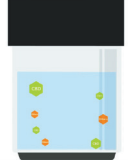
let decarbed herb infuse in food-grade ethanol for **3 hours** at **room temperature**.

1



Filter out the plant material and put the infused ethanol back to the Glass

2



Step 3: Evaporate in POT by NOIDS

Choose Evaporation function.

Evaporation uses very slow heating for safety concerns. During the process, there is a mild smell of ethanol around the machine. The cooking time depends on the amount of ethanol to be evaporated. For 250ml ethanol, expect 4 hours or more cooking time.

IMPORTANT: Read the User Manual for safety instruction.

Step 4: Get the wax out of the Glass

The Evaporation stops automatically when there is no liquid to be evaporated. You will have sticky wax/concentrate on the bottom of the Glass as a result. There are ways to get the wax/concentrate out of the glass.

- ▶ Add edible oil back into the wax, stir till the wax dissolve - end product: potent **infused oil**.
- ▶ Add food-grade ethanol back into the wax, stir till the wax dissolve - end product: **tincture**.
- ▶ Add glycerin back into the wax, stir till the wax dissolve - end product: **glycerin tincture**.

If you leave the ethanol-based tincture evaporate fully at room temperature in the Flat Lid, you can have all the wax in the non-sticky Dish Lid.

1



Add small amount of ethanol back in the wax

2



Pour the tincture into the Flat Lid

3



Leave the tincture at room temperature to evaporate.

Indicators

The fan

The fan starts working a couple of minutes after the initiation of a function. It works during the entire process to keep the machine cool to touch.

The light

The green ring light indicates that POT by NOIDS is cooking. Once the cooking is done, the green ring light turns into a white dot light.

Service



Scan the QR code for NOIDS WhatsApp Service or send an email to:

hello@noids.green

WhatsApp service language:
English

Email service languages:
English, Dutch, German, French.

www.noids.green